

Procedures for sick children attending TCM

Please notify the school by phone, email or Brightwheel when your child is not well. Any information regarding a change in your child's health, including confirmation of a communicable disease/infection must be shared with the staff in a timely manner. In order to warn other parents of their child's possible exposure and to contagious diseases/infections and in the spirit of keeping our community healthy, the Director will send out a health notification to the TCM community. Child's name and circumstances will be kept confidential.

Strep

An infection most commonly presenting in the throat. Fever, swollen neck glands, abdominal pain, and a red throat often accompany strep throat. Treatment requires antibiotics.

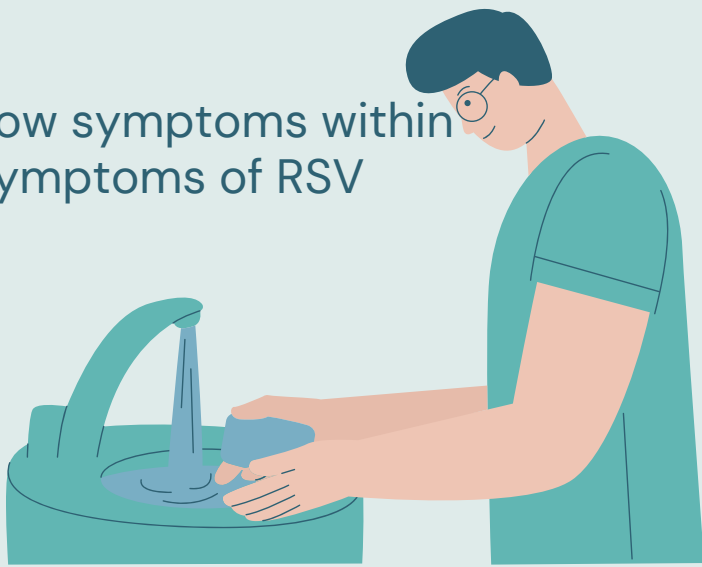
***You can return to school when the child is fever free for 24 hours without fever-reducing medicine and has been on medication for 24 hours.**



RSV

People infected with RSV usually show symptoms within 4 to 6 days after getting infected. Symptoms of RSV infection usually include:

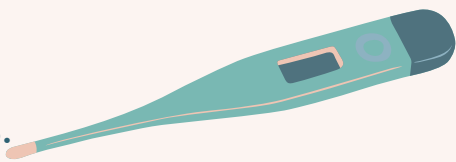
- Runny nose
- Decrease in appetite
- Coughing
- Sneezing
- Fever
- Wheezing



*** You can return to school when the child is fever free for 24 hours without fever-reducing medicine and the coughing/wheezing has subsided.**

Pinkeye

- Pink or red discoloration in one or both eyes.
- Gritty feeling in one or both eyes.
- Itching, irritation and/or burning sensation in the eyes.
- Clear, thin drainage of liquid and increased shedding of tears.
- Stringy and/or thick, white or green discharge from the eyes.

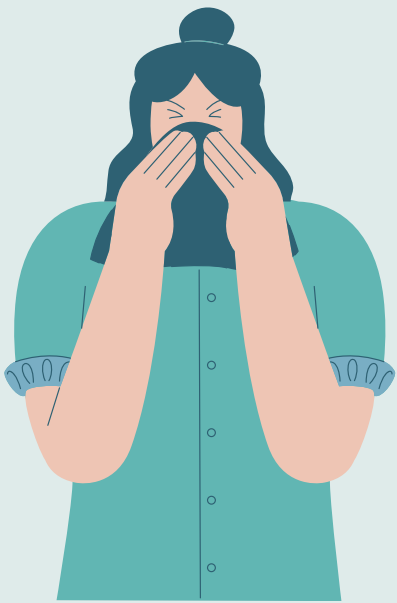


*** You can return to school once the child has been on antibiotics for at least 24 hours. Should the child present any symptoms during their day at school we will have to call for an immediate pick up.**

Fever \geq 100

If a child presents a fever at TCM, teachers take temperatures multiple times with different thermometers to ensure we have the most accurate reading. We will send a photo home as proof of the fever once we call home.

****A child must be fever free for a minimum of 24 hours without any fever reducing medicine before returning to school.**



Rash

Please keep your child home if they are displaying an unusual rash and have them seen by a medical professional.

****You can return once there is clearance from the medical professional stating they are not contagious to the community.**

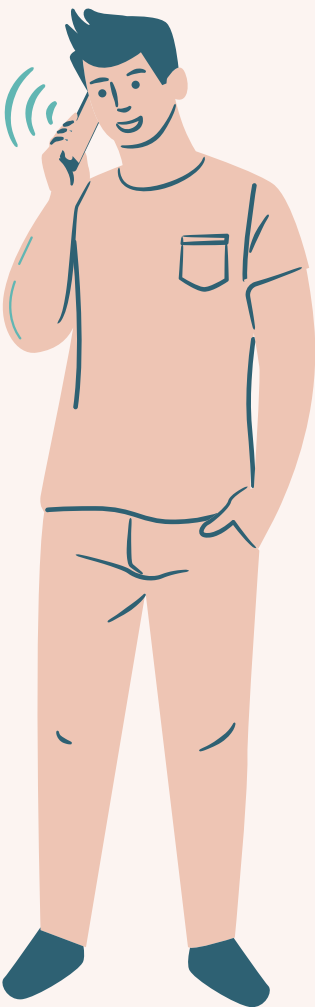


Flu & Viruses

Flu symptoms usually come on suddenly. People who have flu often feel some or all of these symptoms:

- fever* or feeling feverish/chills
- cough
- sore throat
- runny or stuffy nose
- muscle or body aches
- headaches
- fatigue (tiredness)
- some people may have vomiting and diarrhea, though this is more common in children than adults.

*** The child needs to be out of school for at least 5 days. You can return to school on day 6 once the child is fever free for 24 hours without any fever-reducing medicine and they are not presenting intense flu-like symptoms. The child should be feeling themselves and able to participate in the day. The virus can last for upwards of 7 days.**



Diarrhea

If a child presents one episode of diarrhea at TCM. We will call for the child to be picked up immediately.

****A child must be diarrhea free for a minimum of 24 hours without any medicine before returning to school.**



Note from Director: Please know that clearance from your health care provider does not overrule any of the protocols noted above.

Procedures for sick children attending TCM

TCM 's goal is to keep all children, families and staff as healthy as possible. In order to do this we need everyone 's cooperation as a caring community. We will be strict in enforcing the above sickness policy. If your child is sick they must be kept home for everyone's protection. If TCM has concerns, we may request a letter from your pediatrician that states what the diagnosis is and when the child can return to school without being contagious.

Ear Infection

Very common in children.

***You can return once the child is fever free for 24 hours and they are able to participate in the day normally**



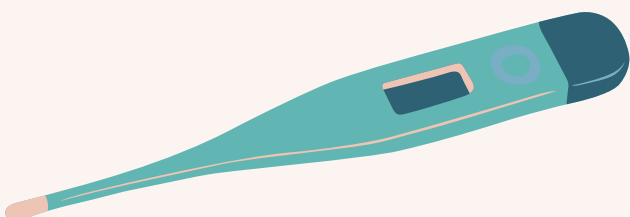
Vaccines

TCM asks that your child stays home for the remainder of the day after they have had a vaccine. The child can return to school the following day provided they are feeling well enough to be in group care. The teachers will be observing the child to ensure they are feeling healthy and will call the parents should anything change in their health.



Vomitting

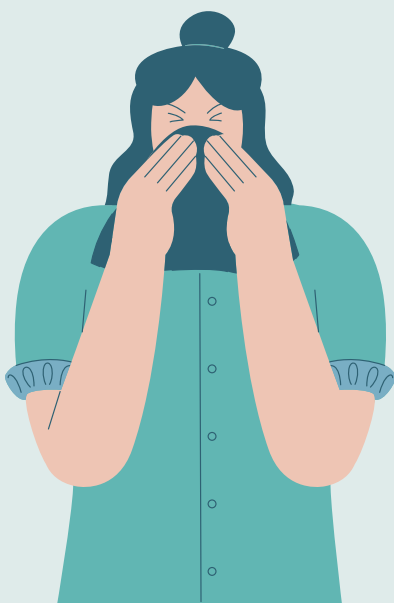
A child who has vomited will be able to return to school 24 hours after the last vomit occurred, and once the child is able to eat a regular diet again.



Impetigo

Please keep your children home if they are diagnosed with the highly contagious skin infection.

***You can return to school once on the antibiotics for 24 hours and once the sores stop blistering and crusting**



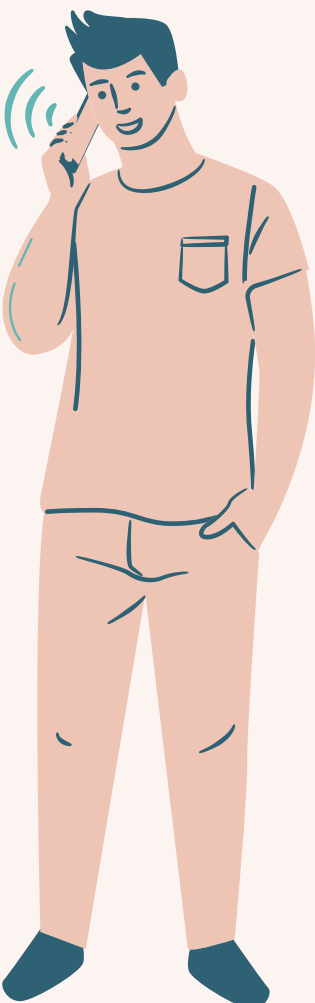
Medicine

When it's the first time your child is on medication we ask them to stay home for 24 hours to prevent unknown allergies, rashes, etc. If the child has never taken a particular medicine, the first dose cannot be given by the school in case of any side effects.



Ticks

Although TCM gets sprayed for ticks and mosquitos, we tend to find these insects in our yard at times. Should your child have a tick on their body during the school day we will contact the parent immediately. The parent will choose to come to the school to remove the tick or pick the child up. If the parent removes the tick and the child stays at TCM we will then monitor the bite and the child's health for the remainder of the day. We always suggest calling a pediatrician after a tick removal.



Lice

You can return to school once the child has received a full treatment and the nits are removed



Note from Director: Please know that clearance from your health care provider does not overrule any of the protocols noted above.

Procedures for sick children attending TCM

TCM ’s goal is to keep all children, families and staff as healthy as possible. In order to do this we need everyone ’s cooperation as a caring community. We will be strict in enforcing the above sickness policy. If your child is sick (s) he must be kept home for everyone ’s protection. If TCM has concerns, we may request a letter from your pediatrician that states what the diagnosis is and when the child can return to school without being contagious.

Hand, Foot & Mouth

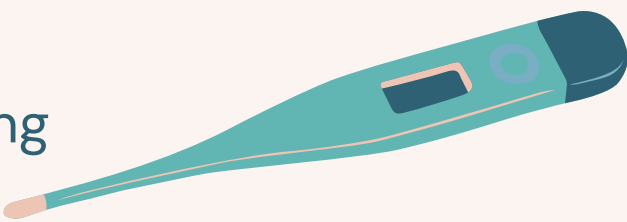
A viral infection characterized by fever, sore throat and tiny blisters on hands and feet.

***You can return to school once the child is fever free for 24 hours without any fever reducing medicine and the sores/blisters are scabbed over including in the mouth**



COVID-19

If you test positive for COVID-19, stay home for at least 5 days and isolate from others in your home. You are likely most infectious during these first 5 days.



- Wear a high-quality mask if you must be around others at home and in public.
- Monitor your symptoms. If you have an emergency warning sign (like trouble breathing), seek emergency medical care immediately.

***You can return to school with a negative COVID test on day 6 & continue to mask until day 11 at TCM.**

Asthma & Allergies

Upon enrollment to the center, children with allergies/asthma or other chronic medical conditions will be identified. Types of allergies that can be life-threatening (such as food, insects/bee stings, environmental, drug or latex) and the possible reactions will be available in the classroom as well as in the child's file. Emergency medications such as EPIPENS must be immediately available for use and will be brought with children for outdoor play or walks, as required. The program will develop an Individual Health Care Plan (IHCP) in collaboration with the parent or guardian, program educators and the child's licensed health care practitioner who must authorize it. The IHCP will include the description of the condition which has been diagnosed by the health care practitioner, the description of the potential side effects of the treatment and an outline of potential consequences to the child's health if the treatment is not administered.



Note from Director: Please know that clearance from your health care provider does not overrule any of the protocols noted above.